

Theatrette Technical Info

The Motley Theatrette is a brick lined performance space located at the back of the ground floor bar. It features a mixture of raked vintage flip down cinema seats and some additional chairs.

Accessibility: Wheelchair accessible, non-gendered and accessible bathrooms down the hallway

Capacity: Between 53-75pax depending on stage space (see diagrams below)

Stage Dimensions: 3.8 deep x 5.91m wide maximum, 2.2 deep x 5.91m wide minimum - sealed concrete

Ceiling Height: 2.6m to lighting truss

Backdrop: Exposed brick wall with functional door in the centre, white canvas projection screen, or black curtain

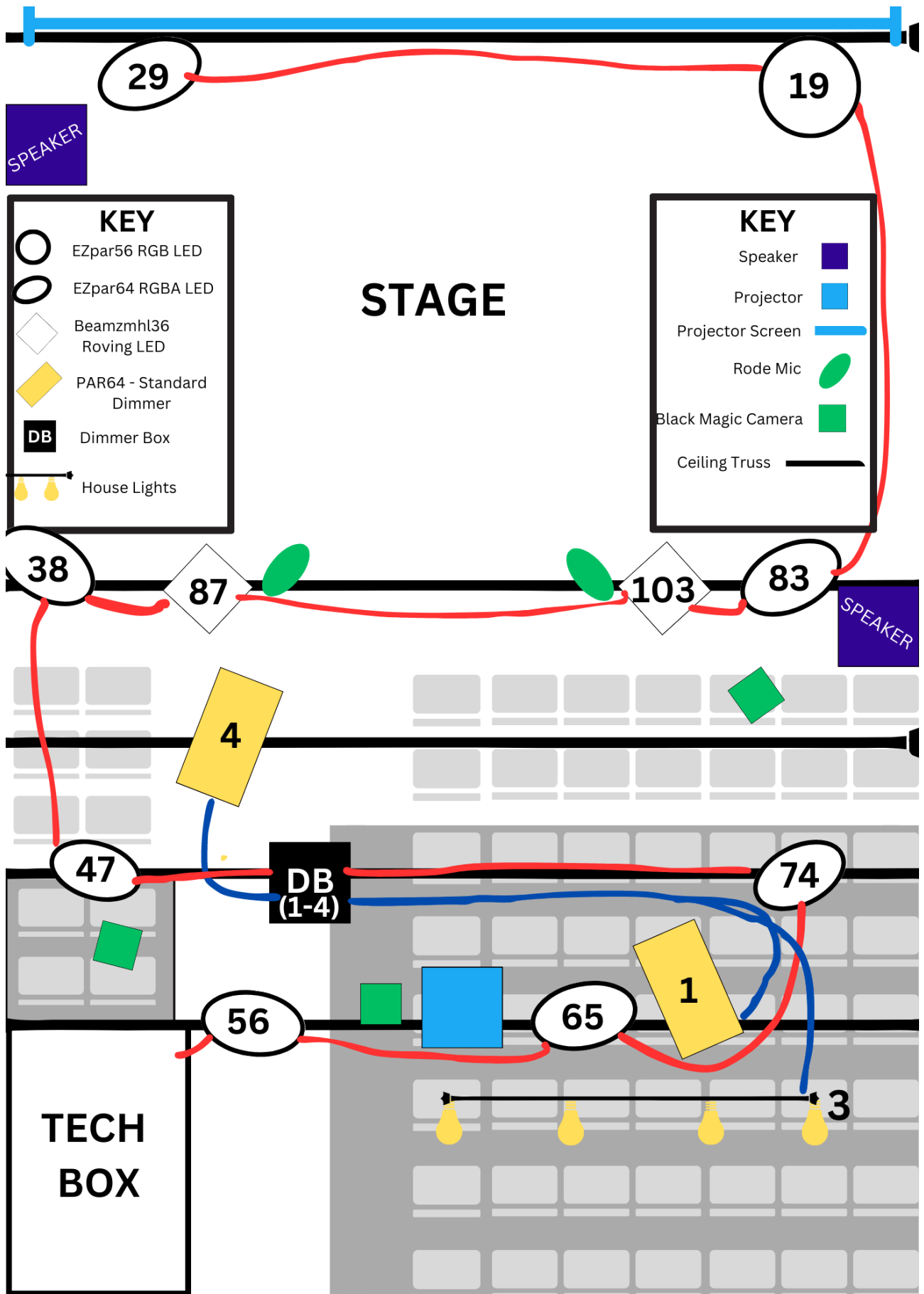
Green room: Greenroom at the rear with toilet and mirrors, side stage area

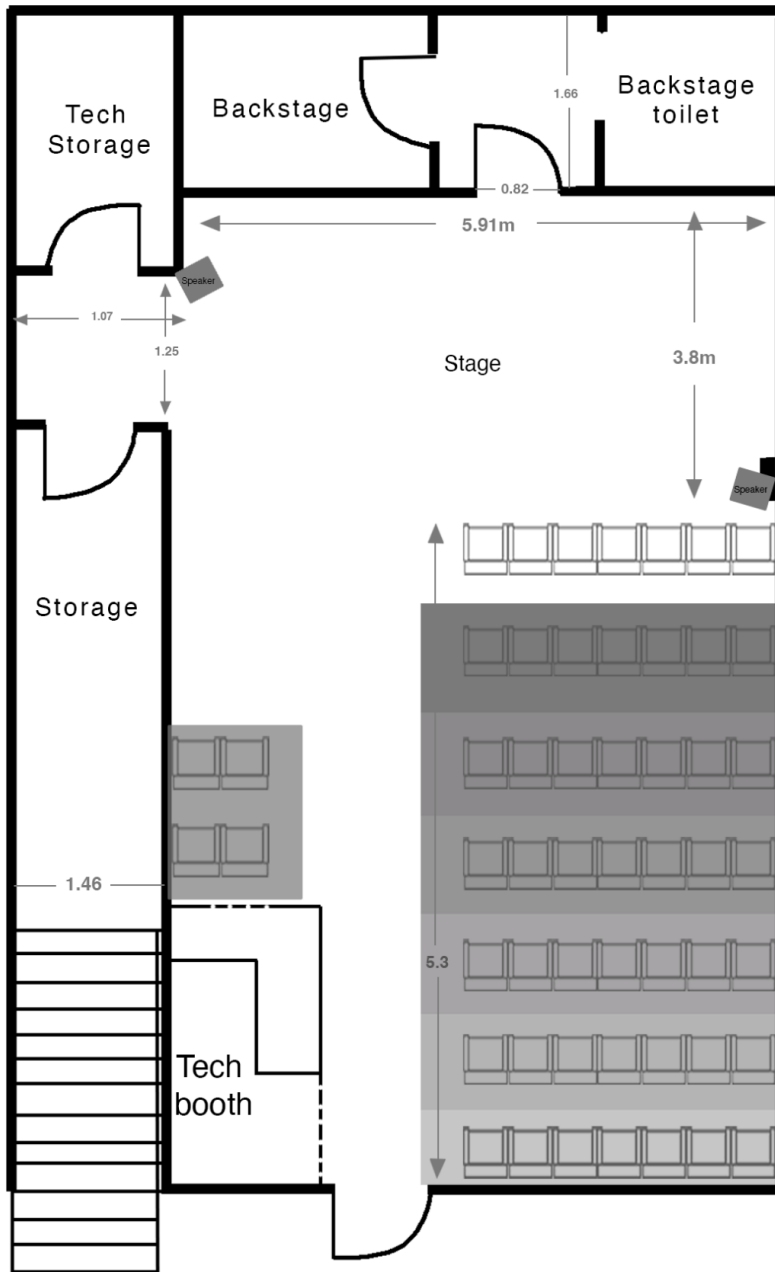
# Stock	Lighting Equipment	Details:
1	iMac Desktop running Qlab 5 with Lighting and Projection Capability	Mac based cue program with Lighting Dashboard, best used for shows where 100% of your cues are pre-programmed - connected via USB interface Pre-patched template found here - https://drive.google.com/file/d/1B1HHvblkw1GA2QFH5FBEBbOVS6Y6et_bt/view?usp=sharing Tutorials available via Youtube
1	Behringer Eurolight LC2412 Professional 24 channel DMX controller	https://mediadl.musictribe.com/media/sys_master/h8e/haa/8849560174622.pdf A manual DMX board featuring faders for each fixture, a bank of 8 faders x 12 banks of memory faders, up to 99 chases, and sound-to-light functions
7	CHAUVET EZpar 64 RGBA	RGBA (includes Amber channel) LED flat light fixtures
2	PAR56 non-LED warm	Warm wash light fixtures - standard

		dimmer
1	PAR56 RGB LED	RGB LED light fixtures
2	Beamz mhl36 Moving Head Wash	RGBW Roving LEDs
1	Dimmer Box - 4 channel	For conventional and house lights, extra available on request
1	Smoke machine	Manual Control
1	20cm mirror ball	- Not currently installed, on request
1	Optoma UHD50 4K UltraHD	https://www.manualslib.com/manual/1490690/Optoma-Uhd50.html
1	CR mini LED Strobe Light	- Not current installed, on request
2	Blackmagic Micro Studio Camera 4K	
1	Blackmagic Production Camera 4K	
1	Blackmagic ATEM MINI Pro Mixer	Digital mixer for camera and mic recording and livestream - using this equipment may incur additional costs

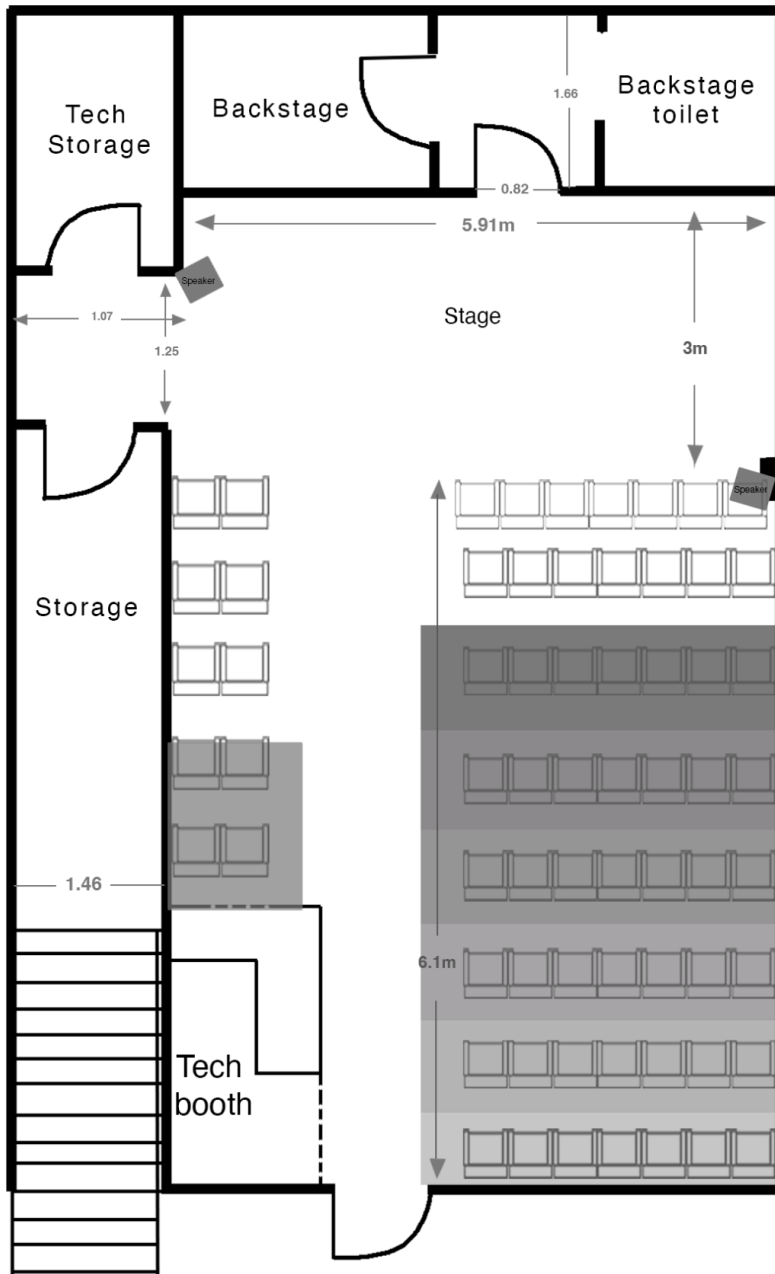
# Stock	Sound Equipment	Details:
1	Samson MDR1688 Maximum Dynamic Range Mixer	http://www.samsontech.com/site_media/legacy_docs/MDR12481688_OM_ENG_v1_1.pdf
1	XLR Patch box	Wall mounted stage rights

2	Samson Live 300watt powered speakers	Wall mounted stage left and right
2	SM58 microphones	Corded Mic
3	PDM57 microphones	Corded Mic
1	Microphone tripod	
2	Microphone stand	
1	Passive DI box	
1	Active DI box	
	XLR cables	
	1/4" Cables	

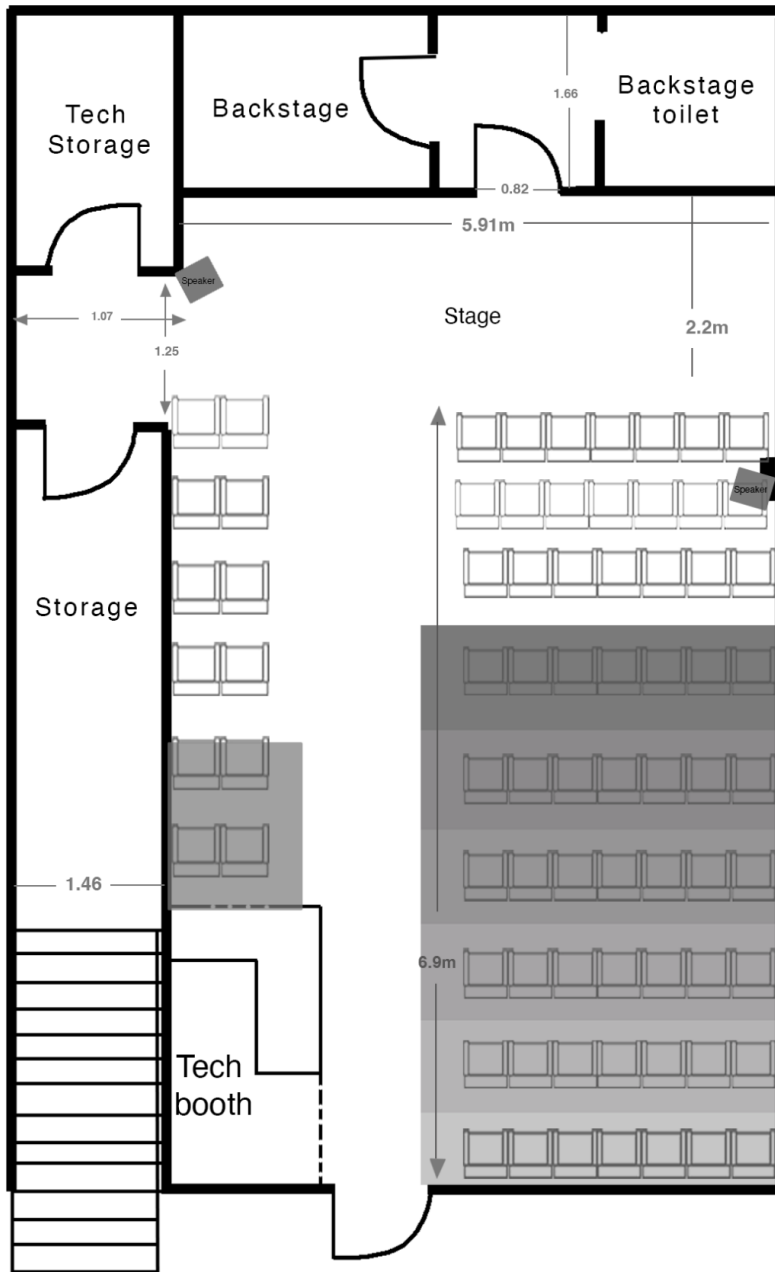




Theatre @ 53pax



Theatre @ 67pax



Theatre @ 75pax